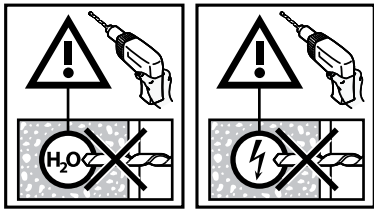
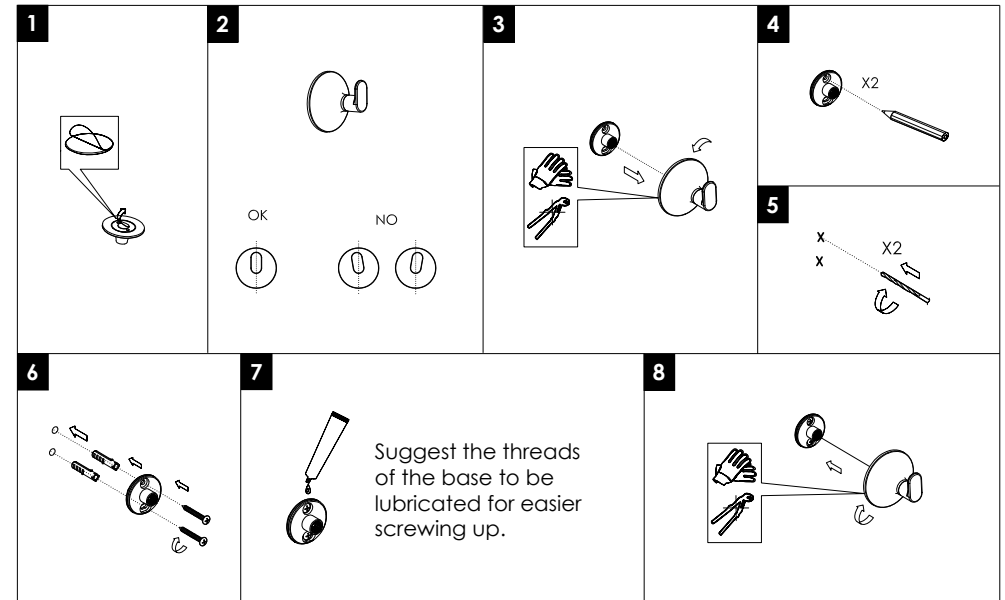
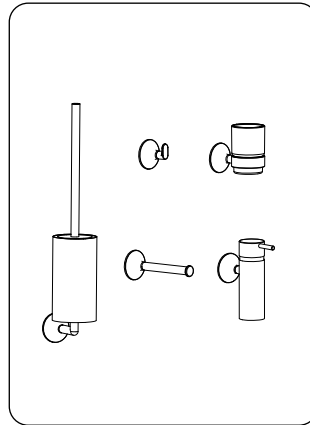




Coordinated Bathrooms Designed For You

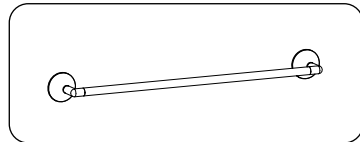


## Installation Steps:



## Installation Instructions

- Avoid using cleaners containing hydrochloric acid, formic acid, concentrated caustic soda, chlorine bleach, or acetic acid, as these can cause significant damage.
- Mixing cleaning agents is generally not allowed.
- Do not use cleaning agents or tools with an abrasive effect, such as unsuitable cleaning powders, scouring pads or microfibre cloths.
- The use of steam cleaners is not allowed as the high temperatures can damage the products.



### Dimension Drawing:

