

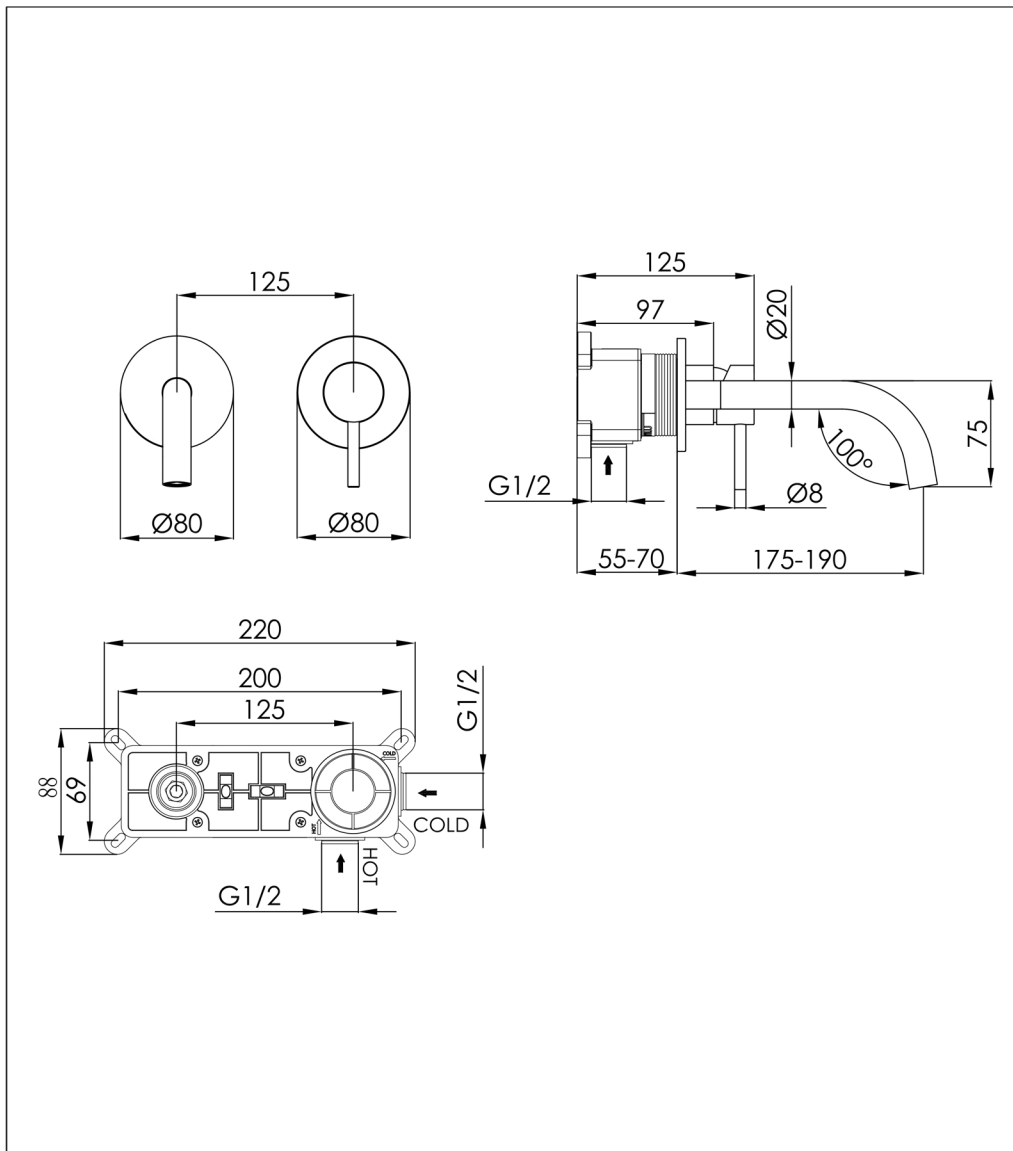


Technical Data Sheet

Product range: INOX

Product code: IX173MP

Finishes Available: Stainless Steel



Min Pressure:

MP 0.5

Approvals:

WRAS

Connections:

G 1/2"

Warranty:

15 Years (5 on cartridges)

Flow Rate

0.2Bar: 3.8L/min

0.5Bar: 4.8L/min

1Bar: 6L/min

2Bar: 8.2L/min

3Bar: 9.8L/min