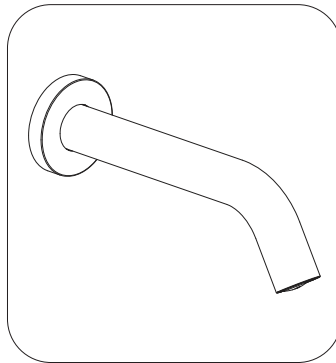




Coordinated Bathrooms Designed For You

**Installation & Maintenance Instructions**



**React sensor wall spout mains and battery operated**

# CONTENT

<b>IMPORTANT</b> .....	<b>3</b>
<b>WARNING</b> .....	<b>3</b>
<b>FUNCTIONS AND FEATURES</b> .....	<b>4</b>
<b>TECHNICAL SPECIFICATION</b> .....	<b>5</b>
<b>USING METHOD</b> .....	<b>5</b>
<b>DIMENSIONS</b> .....	<b>6</b>
<b>SERVICE PARTS LIST</b> .....	<b>7</b>
<b>INSTALLATION STEPS</b> .....	<b>8</b>
<b>AERATOR CLEAN</b> .....	<b>11</b>
<b>FILTER CLEAN</b> .....	<b>11</b>
<b>TROUBLESHOOTING</b> .....	<b>12</b>

## IMPORTANT

- Please read these instructions carefully before starting installation and keep for future reference.
- Remove all packaging and check the product for missing parts or damage before starting installation.
- Any alterations made to this product and fittings may infringe water regulations and will invalidate the guarantee.
- The installation must comply with all Local/National Water Supply Authority Regulations/Byelaws and Building and Plumbing (UK:BS6700) Regulations.
- We strongly recommend that you use a qualified and registered plumber.

## WARNING

- No person other than a service engineer should disassemble, repair or modify this faucet, unless it is specifically described in this manual. Failure to do so may result in electric shock or product malfunction.
- Do not strike or kick the faucet or controller box, as this may damage the unit or cause a leak.
- If the room temperature drops to freezing, wrap the pipes with insulation.
- Make sure the power cord does not come in contact with the hot water supply pipe.
- Avoid placing any objects within the detection range of the infrared sensor.

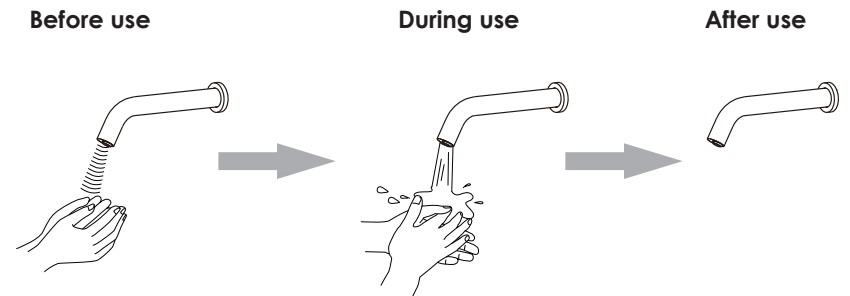
## FUNCTIONS AND FEATURES

- Hands free infrared sensor activated
- Automatic shut-off water saving flow control.
- Improves water and energy efficiency.
- Easy to use-ideal for disable or elderly.
- Hygienic-reduces risk of cross-contamination.
- Mains and battery powered options included.
- Vandal resistant.
- Easy to fit in new installations or retrofits.
- Self-adjusting to the environments and sensitive to environmental change of light and refection also detect water wastage.
- Sensor provides faster,more convenient experience,ensuring the tap is never left running.

## TECHNICAL SPECIFICATION

<b>Power input</b>	DC:6V(4×1, 4AA alkaline battery)
<b>Power Consumption</b>	DC:Standby:≤0.2mW AC:Standby:≤2W;Active:≤5W
<b>Sensing Distance</b>	15-30CM(base on a white board)
<b>Water Pressure</b>	0.05MPa-0.7MPa
<b>Temperature</b>	1°C -55°C
<b>Dia.of inlet pipe</b>	G1/2"
<b>Water temperature</b>	1 °C-50 °C
<b>Flux</b>	0.05-0.125L/s

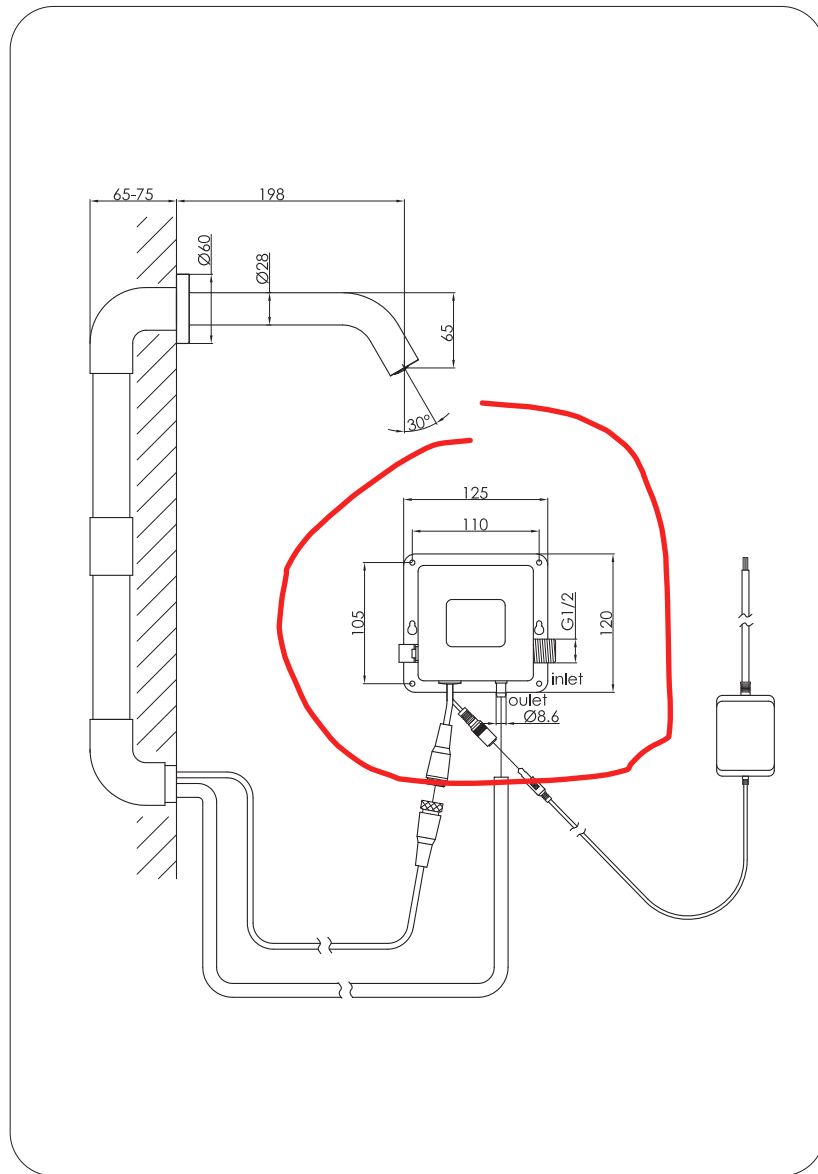
## USING METHOD



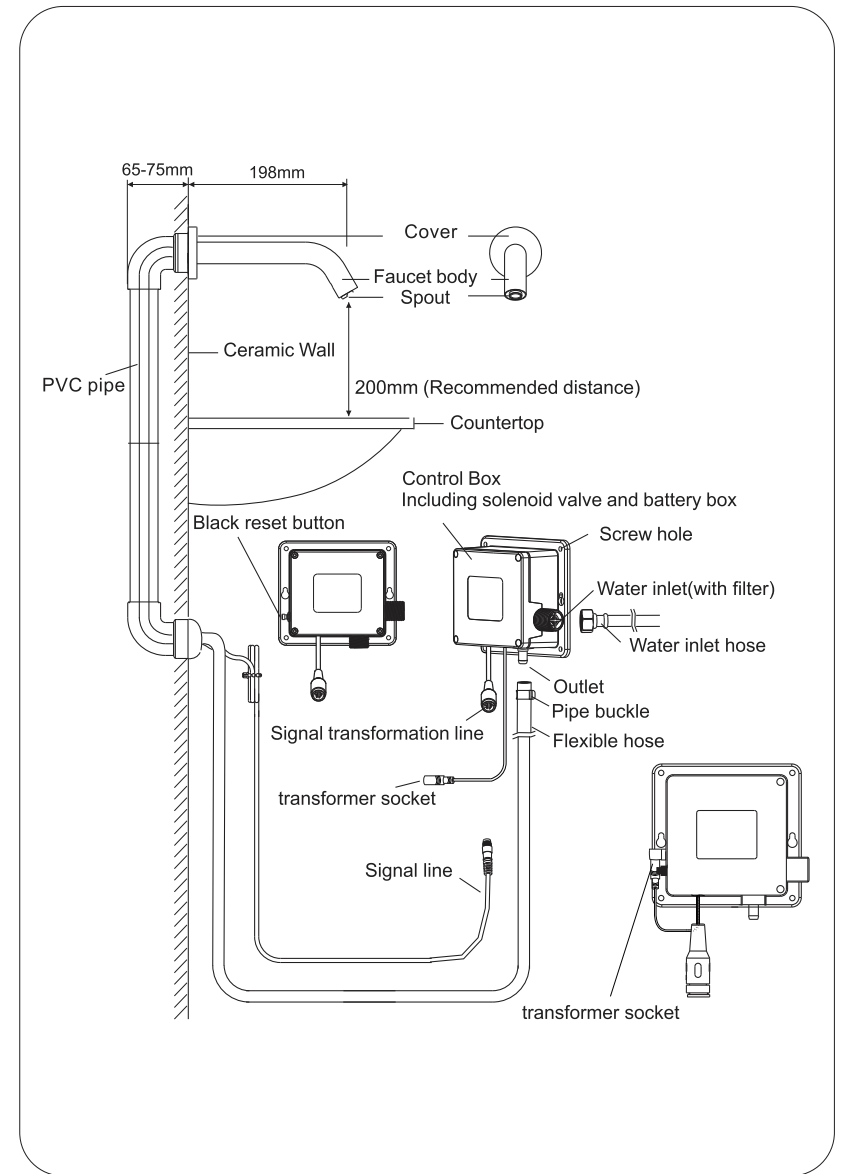
### NOTE:

When your hand enters the inductive field the water flows,remove your hand from the field and the water stops.It will stop automatically after flushing  $60 \pm 15\%$  seconds continuously,leave your hand from the inductive field for 3 seconds then enter the field to flush again.

## DIMENSIONS

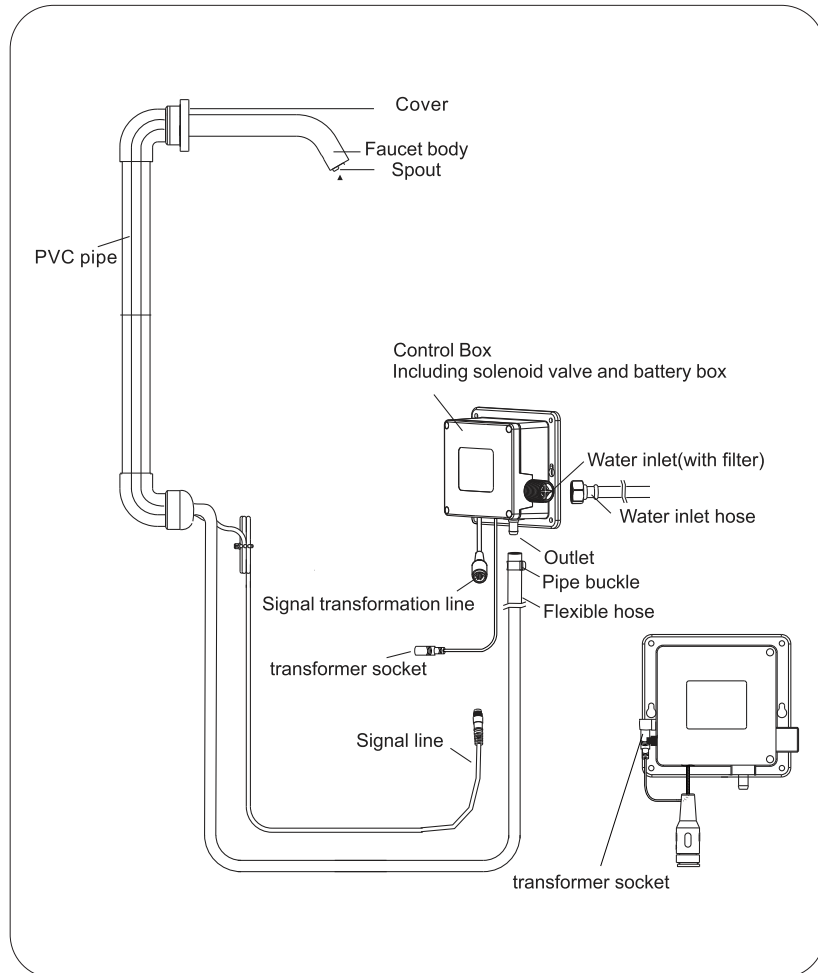


## SERVICE PARTS LIST

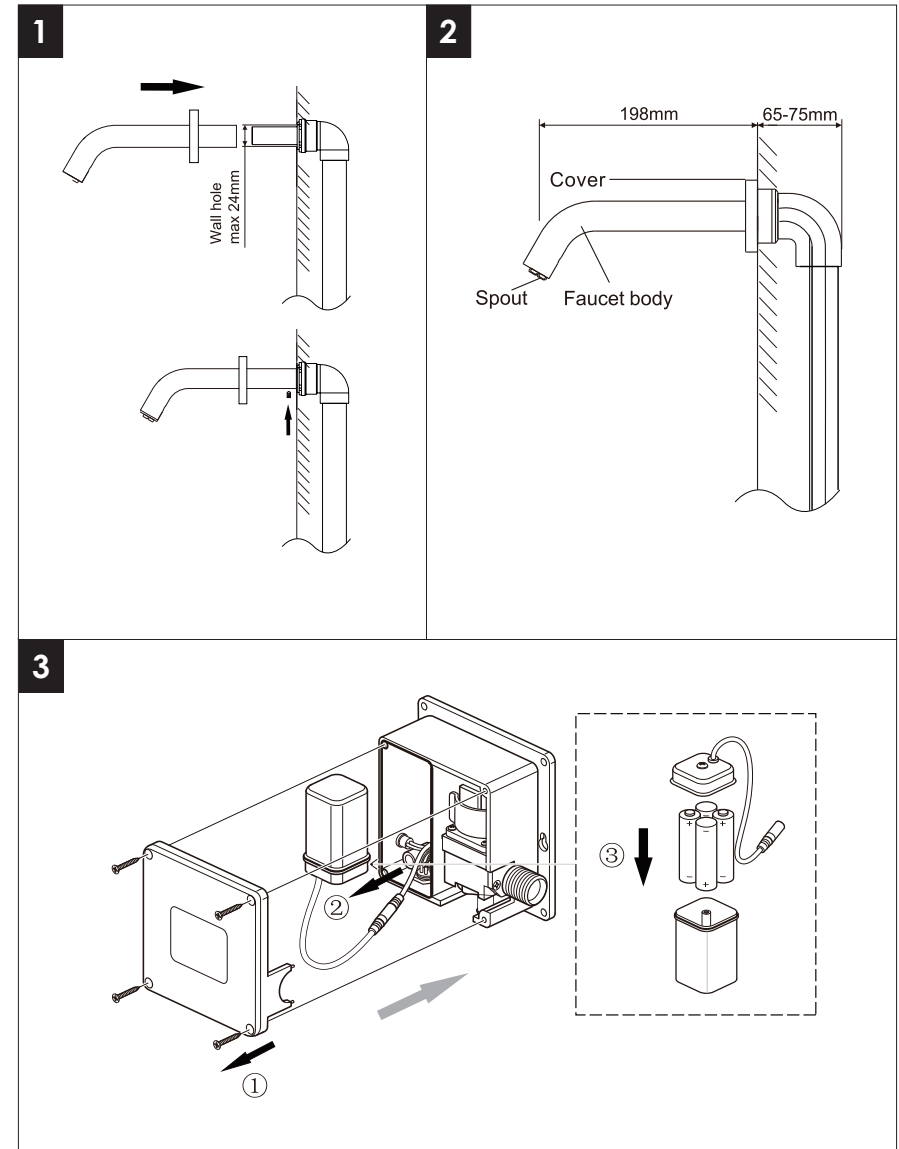


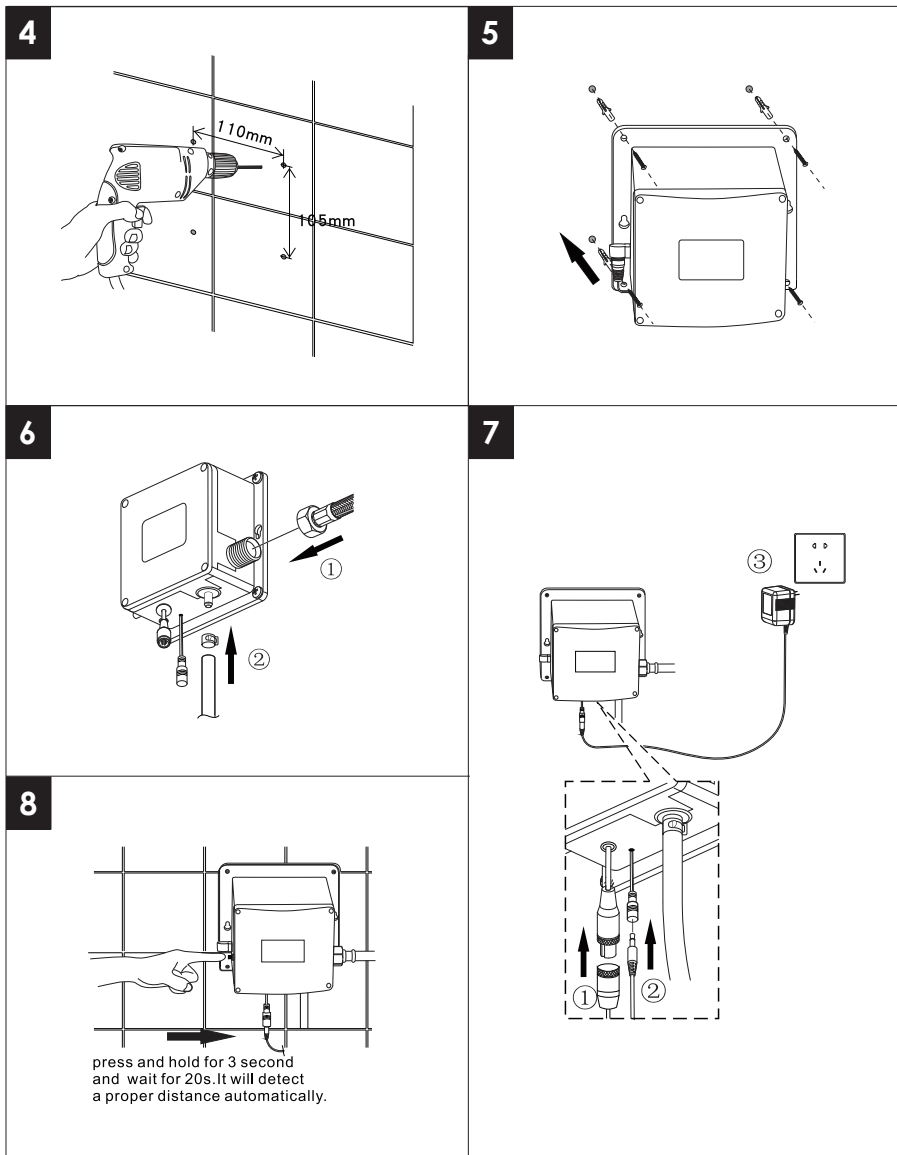
## INSTALLATION STEPS

**NOTE:** To avoid electronic accessories, wiring damage/breakage during installation. Be sure to connect the fittings as shown in the picture below and connect the water supply and power supply, then check whether it can be used normally before installing it into the wall.

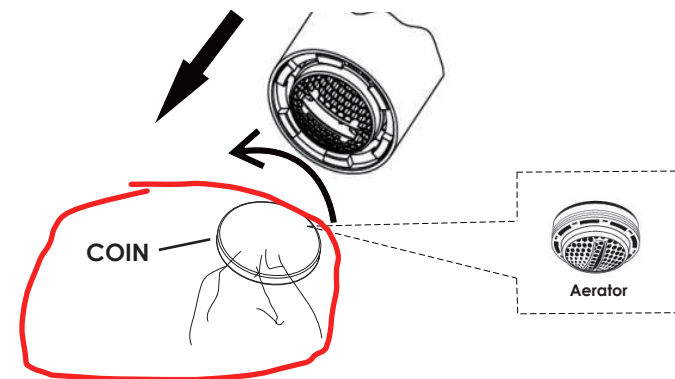


## INSTALLATION STEPS





## AERATOR CLEAN

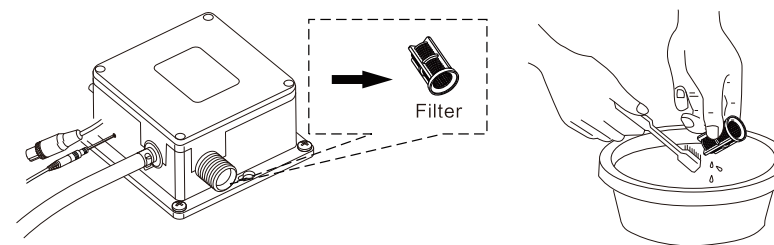


● Please ensure the filter is cleaned if the water flow is reduced.

1. Turn off the isolating valve.
2. Remove the filter with a coin stuck in the aerator groove by rotating it counterclockwise.
3. Wash filter out and replace.

## FILTER CLEAN

● Please ensure the filter is cleaned every 6 months or if the water flow is reduced.



1. Turn off the isolating valve.
2. Unscrew flex hose.
3. Take out filter.
4. Wash filter out and replace.

## TROUBLESHOOTING

Problem	Cause	Solution
No water out	The batter is exhausted	Change the battery
	Water supply cut off	Check supply
	Dirt in the filter	Clean the filter
	Water pressure to low	Raise the pressure
Water will not turn off	Dirt on the sensor window	Clean the sensor
Too little water flow	Water supply is turned down	Adjust water supply
	The filter is too dirty	Clean the filter
	Water pressure is too low	Raise the pressure
Short cycles of battery	Incorrect batteries	Change to 4AA Alkalinebatteries
The indicator light is not on	The light is broken	Change the light or circuit board
	The circuit board is wet or signal line is wet	Dry out
	The battery is exhausted	Change the battery
	Poor connection of battery	Change battery connections