

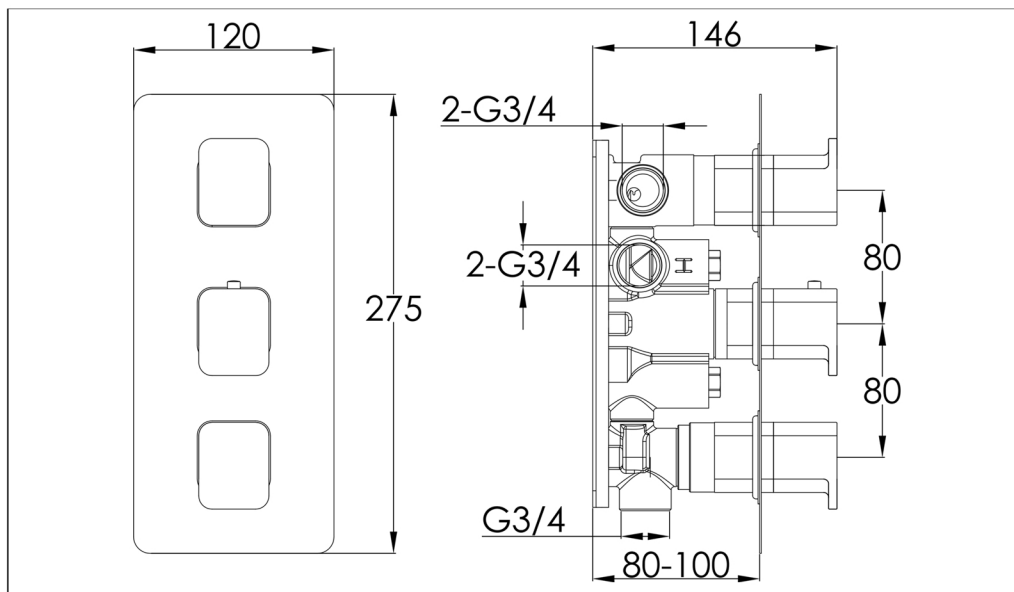


# Technical Data Sheet

Product range: AXEL

Product code: 74690MBH, 74690MWH

Finishes Available: Matt Black, Matt White



**Min Pressure:**  
MP 0.5

**Approvals:**  
WRAS

**Connections:**  
G3/4"

**Warranty:**  
15 Years (5 on cartridges)

## Flow Rate

Diverter side  
0.2Bar: 8.5L/min  
0.5Bar: 12L/min  
1Bar: 16L/min  
2Bar: 22.5L/min  
3Bar: 28.5L/min

## Flow Rate

On-Off side  
0.2Bar: 12L/min  
0.5Bar: 17L/min  
1Bar: 21L/min  
2Bar: 28.5L/min  
3Bar: 36L/min