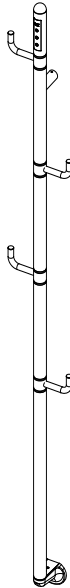


Coordinated Bathrooms Designed For You

Installation & Maintenance Instructions



FLO ELECTRIC TOWEL RAIL WITH HOOK 1661

CONTENTS

Important.....	01
Specific Regulations for Bathrooms.....	02
Technical Specification	02
Dimension	03
Spare Parts	04
Installation Steps.....	05
Testing before formal use.	08
The guide of the control panel.....	09
Switch on & off	10
Timer	10
Adjust Temperature.....	10
Test	11
Troubleshoot	11
Maintenance & Cleaning.....	11

Important

The product is designed for household or residential use. You are advised to have the product installed by an authorized professional installer. Make sure the product is properly connected to 230V and is earthed.

WARNING: This device is not designed to bear the weight of a person, and no one should therefore climb onto it.

Safety precautions: This appliance can be used by children aged from 8 years and above and persons with reduced physical sensory or mental capabilities or lack of experience and knowledge if they are supervised or have been given instruction concerning use of the appliance in a safe way and understand the hazards involved. Children should not play with the appliance.

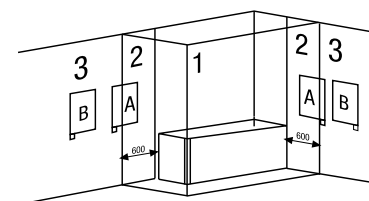
Cleaning and user maintenance should not be carried out by children without supervision. Children must be supervised at all times to ensure that they do not interfere with the product.

Note: This device must be installed as prescribed by the relevant wiring rules and regulations, including the regulations covering installation of appliances and accessories in 'wet areas' such as bathrooms, showers and laundries. Installations should be in accordance with National and Local Electrical Codes applicable in UK.

Specific Regulations for Bathrooms

This product is in compliance with CLASS II safety regulations (double insulation). It can be installed in areas 2 and 3, position A and B whenever it observes the following regulations

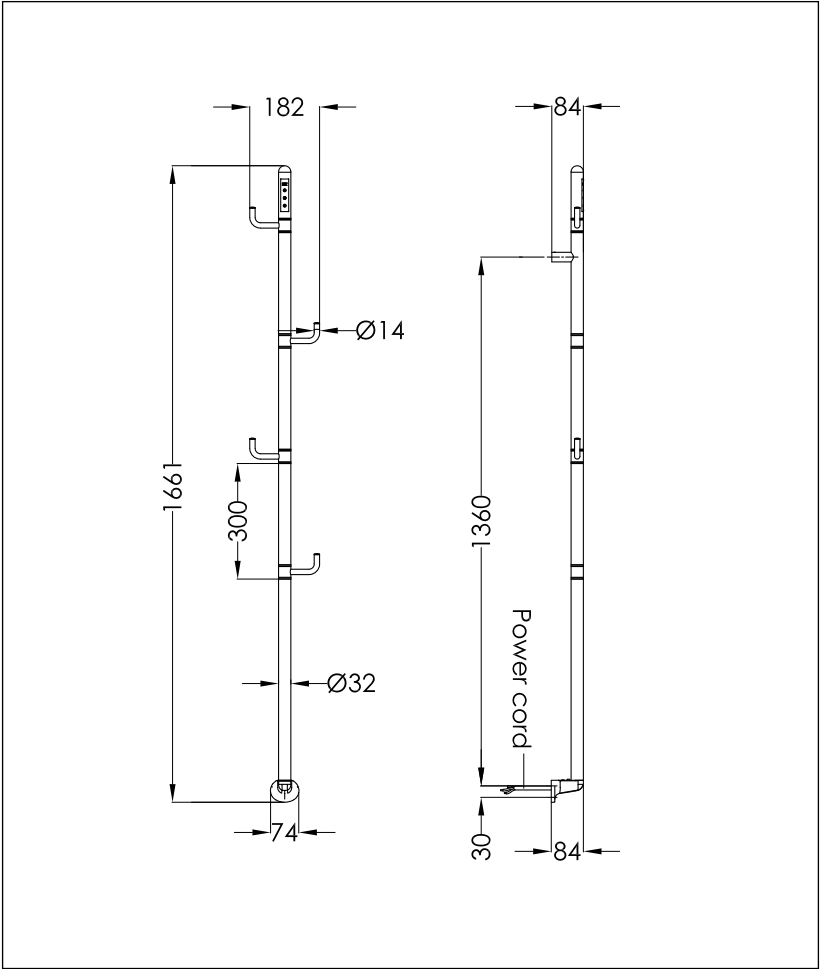
- In bathrooms, the product must never be installed in such a way that the switches and other control products may be touched by someone in the bathtub or having a shower.
- In a kitchen or bathroom, the body of the product shall be placed at least 25 cm from the floor.
- It must not be earthed.



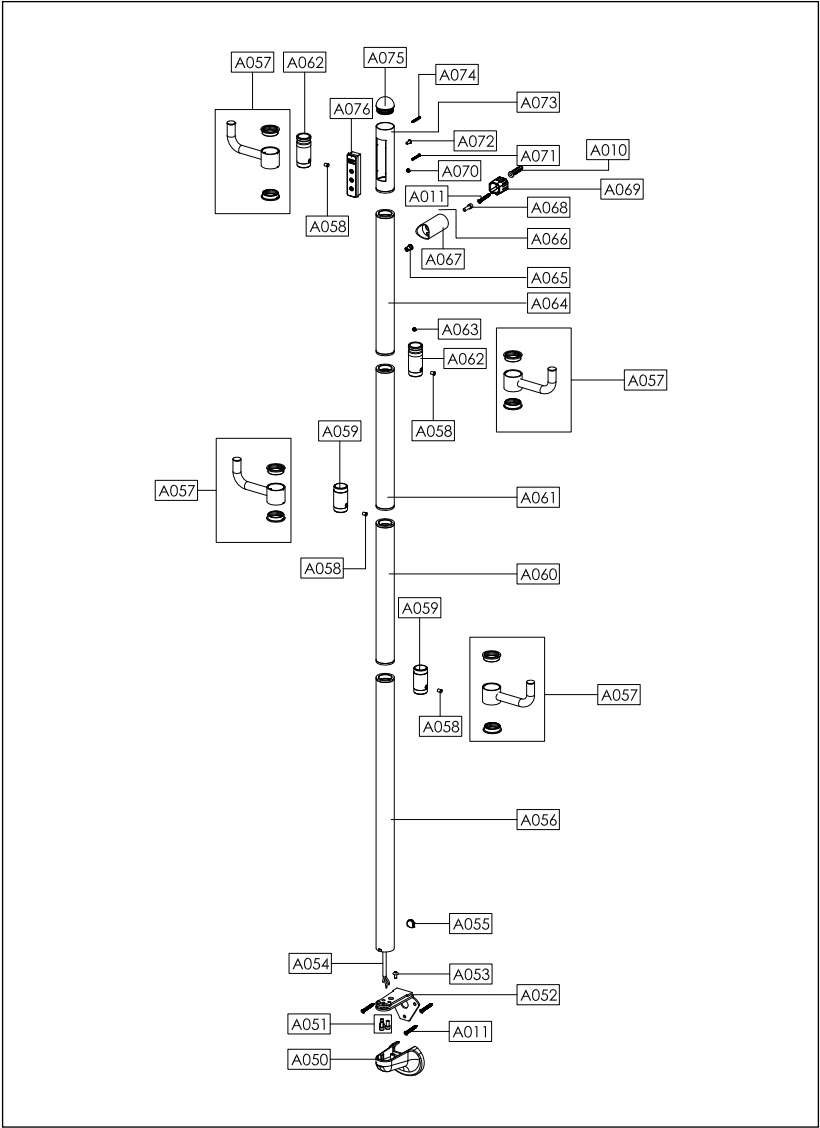
Technical Specification

Frequency	50Hz
Rated power	50W
Voltage	AC220V
Heating time	5-10min
Heating temperature	45-60 °C
Ingress protection	IPX4
Heating method	Dry heating

Dimension



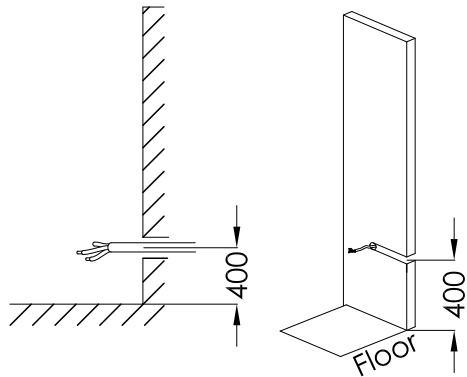
Spare Parts



Installation Steps

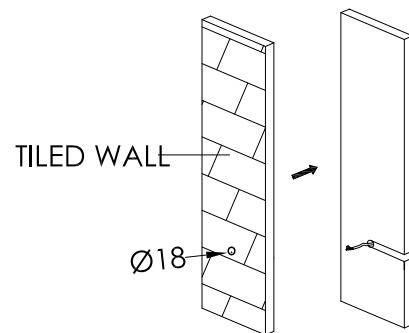
1

Reserve the power cable in the wall.



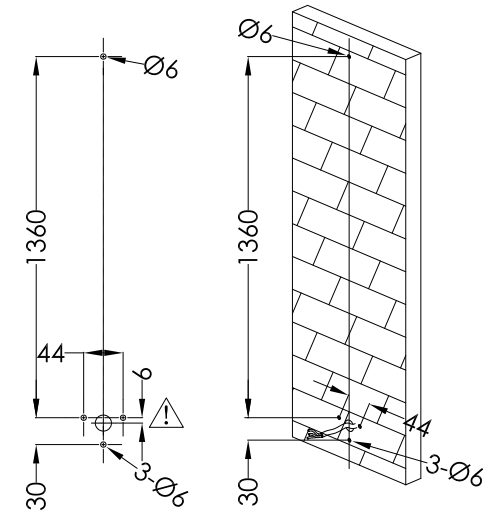
2

To drill a hole of 18mm in the tiled wall.

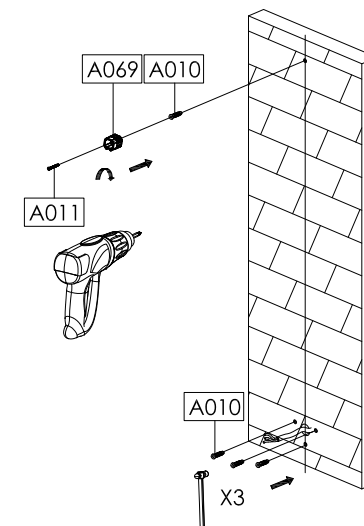


3

To drill four 6mm holes at the following locations.



4



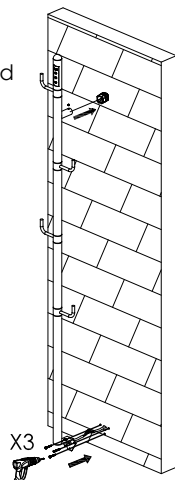
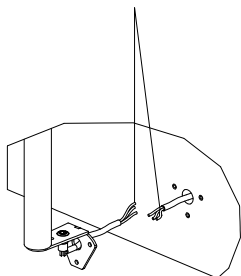
5

-Please disconnect the power supply when connecting the corresponding cable!

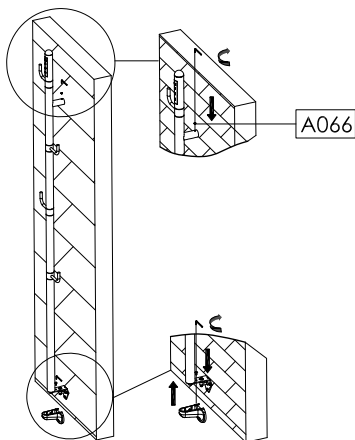
L(Brown)	N(Blue)	E(Yellow and green)
Live wire	Neutral wire	Protective earth

-Please protect it from water and moisture.


-Please take care to keep the screw holes, socket and data cables free of debris.



6

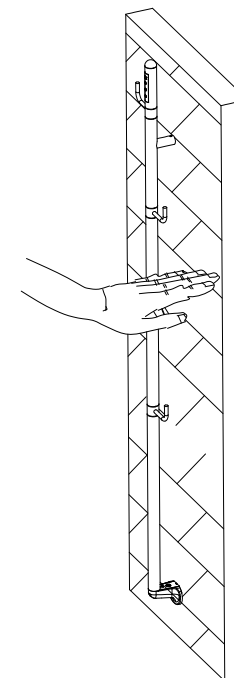


Testing before formal use.

-Connect the power cord, press the  button and test for 15-30 minutes.

-Touch the towel bar lightly with your hand to feel the temperature.

-Touch the towel bar again at an interval of 30-40 minutes and if the temperature is stable, it is ready for normal use.

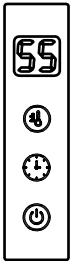


The guide of the control panel



Stand-by mode

-In stand-by mode,
only the power button
fade in and out.



Power-on mode

-Press the power button
for one sencond into
power-on mode.

	Screen
	Ajust Temperature
	Timer
	On/Off

Switch on & off

After connecting the power supply, and the beep sounds into the stand-by mode.

In stand-by mode, press and the temperature button for 5 seconds to change Celsius or Fahrenheit (factory default is Celsius), the buzzer will ring when the setting is successful.

To switch the product on, please press the power button for one second. To switch the product off, please press the power button for one second again.

Timer

With the power on, please press the timer button to set the timing. Available Timing:1H-2H-3H-4H-5H-6H-7H-8H.

Adjust Temperature

With the power on, please press the temperature button for one sencond to set the temperature.

Available Temperature:45℃ (115 ℉) , 50℃ (125 ℉) ,55℃ (135 ℉) ,60℃ (145 ℉)

With the power on, Press the temperature button for one second to switch to: real-time temperature/timed time alternating display.

Pre-set

Please preset the start-up time (1 hour to 9 hours) by pressing the temperature button in stand-by mode, and the restart temperature is based on the temperature at the time of the last shutdown.

Test

When an abnormality occurs in the circuit, the chip automatically detects it and displays it on the screen, while the circuit carries out automatic protection to force the radiator to be off.

Troubleshoot

-Please troubleshoot according to the display on the screen.

E1	Temperature sensor open circuit.
E2	Temperature sensor short-circuited.
E3	Over-temperature protection.
E0	Leakage protection.

Maintenance & Cleaning

The product does not require any type of maintenance. We recommend that all parts of the product are kept clean (behind, underneath, upper fins, etc.). Do not use any abrasive product on the steel main body. Clean it with a damp cloth and a pH neutral soap, and the control panel with a dry cloth.

